



ab192149 –TSLP Human SimpleStep ELISA[®] Kit

Instructions for Use

For the quantitative measurement of human TSLP in serum and cell culture supernatants.

This product is for research use only and is not intended for diagnostic use.

Table of Contents

INTRODUCTION

1. BACKGROUND	2
2. ASSAY SUMMARY	3

GENERAL INFORMATION

3. PRECAUTIONS	4
4. STORAGE AND STABILITY	4
5. MATERIALS SUPPLIED	4
6. MATERIALS REQUIRED, NOT SUPPLIED	5
7. LIMITATIONS	5
8. TECHNICAL HINTS	5

ASSAY PREPARATION

9. REAGENT PREPARATION	7
10. STANDARD PREPARATION	8
11. SAMPLE PREPARATION	9
12. PLATE PREPARATION	10

ASSAY PROCEDURE

13. ASSAY PROCEDURE	11
---------------------	----

DATA ANALYSIS

14. CALCULATIONS	13
15. TYPICAL DATA	14
16. TYPICAL SAMPLE VALUES	16
17. SPECIES REACTIVITY	20

RESOURCES

18. TROUBLESHOOTING	21
19. NOTES	22

1. BACKGROUND

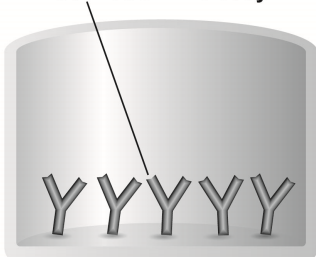
TSLP *in vitro* SimpleStep ELISA® (Enzyme-Linked Immunosorbent Assay) kit is designed for the quantitative measurement of human TSLP protein in serum and cell culture supernatants.

The SimpleStep ELISA® employs an affinity tag labeled capture antibody and a reporter conjugated detector antibody which immunocapture the sample analyte in solution. This entire complex (capture antibody/analyte/detector antibody) is in turn immobilized via immunoaffinity of an anti-tag antibody coating the well. To perform the assay, samples or standards are added to the wells, followed by the antibody mix. After incubation, the wells are washed to remove unbound material. TMB substrate is added and during incubation is catalyzed by HRP, generating blue coloration. This reaction is then stopped by addition of Stop Solution completing any color change from blue to yellow. Signal is generated proportionally to the amount of bound analyte and the intensity is measured at 450 nm. Optionally, instead of the endpoint reading, development of TMB can be recorded kinetically at 600 nm.

Thymic stromal lymphopoietin (TSLP) is a protein belonging to the IL-7 cytokine family. TSLP is released by epithelial cells and keratinocytes in response to trauma, infection or allergen. It acts upon dendritic cells to mediate TH2 mediated immune response and appears to be a key mediator in many inflammatory diseases such as: Asthma, Eczema, and Atopic Dermatitis. TSLP also acts upon mast cells promote the release of IL-5, -6, and -13 in the presence of IL-1 and TNF- α .

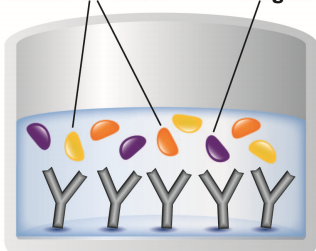
2. ASSAY SUMMARY

Immobilization Antibody



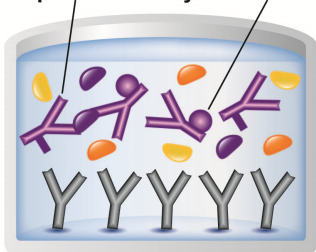
Remove appropriate number of antibody coated well strips. Equilibrate all reagents to room temperature. Prepare all reagents, samples, and standards as instructed.

Matrix Proteins Target Analyte



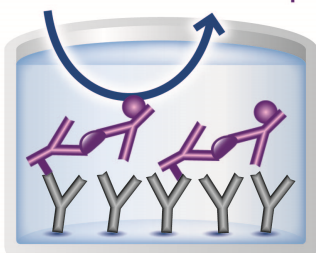
Add standard or sample to appropriate wells.

Capture Antibody Detector Antibody



Add Antibody Cocktail to all wells. Incubate at room temperature.

Substrate Color Development



Aspirate and wash each well. Add TMB Substrate to each well and incubate. Add Stop Solution at a defined endpoint. Alternatively, record color development kinetically after TMB substrate addition.

3. PRECAUTIONS

Please read these instructions carefully prior to beginning the assay.

All kit components have been formulated and quality control tested to function successfully as a kit. Modifications to the kit components or procedures may result in loss of performance.

4. STORAGE AND STABILITY

Store kit at 2-8°C immediately upon receipt.

Refer to list of materials supplied for storage conditions of individual components. Observe the storage conditions for individual prepared components in sections 9 & 10.

5. MATERIALS SUPPLIED

Item	Amount	Storage Condition (Before Preparation)
10X TSLP Capture Antibody	600 µL	+2-8°C
10X TSLP Detector Antibody	600 µL	+2-8°C
TSLP Human Lyophilized Recombinant Protein	2 Vials	+2-8°C
Antibody Diluent 4BI	6 mL	+2-8°C
10X Wash Buffer PT	20 mL	+2-8°C
TMB Substrate	12 mL	+2-8°C
Stop Solution	12 mL	+2-8°C
Sample Diluent NS	50 mL	+2-8°C
Sample Diluent 50BS	20 mL	+2-8°C
Pre-Coated 96 Well Microplate (12 x 8 well strips)	96 Wells	+2-8°C
Plate Seal	1	+2-8°C

6. MATERIALS REQUIRED, NOT SUPPLIED

These materials are not included in the kit, but will be required to successfully utilize this assay:

- Microplate reader capable of measuring absorbance at 450 or 600 nm.
- Method for determining protein concentration (BCA assay recommended).
- Deionized water.
- Multi- and single-channel pipettes.
- Tubes for standard dilution.
- Plate shaker for all incubation steps.
- Optional: Phenylmethylsulfonyl Fluoride (PMSF) (or other protease inhibitors).

7. LIMITATIONS

- Assay kit intended for research use only. Not for use in diagnostic procedures.
- Do not mix or substitute reagents or materials from other kit lots or vendors. Kits are QC tested as a set of components and performance cannot be guaranteed if utilized separately or substituted.

8. TECHNICAL HINTS

- Samples generating values higher than the highest standard should be further diluted in the appropriate sample dilution buffers.
- Avoid foaming or bubbles when mixing or reconstituting components.
- Avoid cross contamination of samples or reagents by changing tips between sample, standard and reagent additions.
- Ensure plates are properly sealed or covered during incubation steps.

- Complete removal of all solutions and buffers during wash steps is necessary to minimize background.
- As a guide, typical ranges of sample concentration for commonly used sample types are shown below in Sample Preparation (section 11).
- All samples should be mixed thoroughly and gently.
- Avoid multiple freeze/thaw of samples.
- Incubate ELISA plates on a plate shaker during all incubation steps
- When generating positive control samples, it is advisable to change pipette tips after each step.
- The provided 5X Cell Extraction Buffer contains phosphatase inhibitors and protease inhibitor aprotinin. Additional protease inhibitors can be added if required.
- The provided Antibody Diluents and Sample Diluents contain protease inhibitor aprotinin. Additional protease inhibitors can be added if required.
- The provided 50X Cell Extraction Enhancer Solution may precipitate when stored at +4°C. To dissolve, warm briefly at +37°C and mix gently. The 50X Cell Extraction Enhancer Solution can be stored at room temperature to avoid precipitation.
- **To avoid high background always add samples or standards to the well before the addition of the antibody cocktail.**
- **This kit is sold based on number of tests. A ‘test’ simply refers to a single assay well. The number of wells that contain sample, control or standard will vary by product. Review the protocol completely to confirm this kit meets your requirements. Please contact our Technical Support staff with any questions.**

9. REAGENT PREPARATION

- Equilibrate all reagents to room temperature (18-25°C) prior to use. The kit contains enough reagents for 96 wells. **The sample volumes below are sufficient for 48 wells (6 x 8-well strips); adjust volumes as needed for the number of strips in your experiment.**
- Prepare only as much reagent as is needed on the day of the experiment. Capture and Detector Antibodies have only been tested for stability in the provided 10X formulations.

9.1 **1X Wash Buffer PT**

Prepare 1X Wash Buffer PT by diluting 10X Wash Buffer PT with deionized water. To make 50 mL 1X Wash Buffer PT combine 5 mL 10X Wash Buffer PT with 45 mL deionized water. Mix thoroughly and gently.

9.2 **Antibody Cocktail**

Prepare Antibody Cocktail by diluting the capture and detector antibodies in Antibody Diluent 4BI. To make 3 mL of the Antibody Cocktail combine 300 μ L 10X Capture Antibody and 300 μ L 10X Detector Antibody with 2.4 mL Antibody Diluent 4BI. Mix thoroughly and gently.

10. STANDARD PREPARATION

Prepare serially diluted standards immediately prior to use. Always prepare a fresh set of positive controls for every use.

The following table describes the preparation of a standard curve for duplicate measurements (recommended).

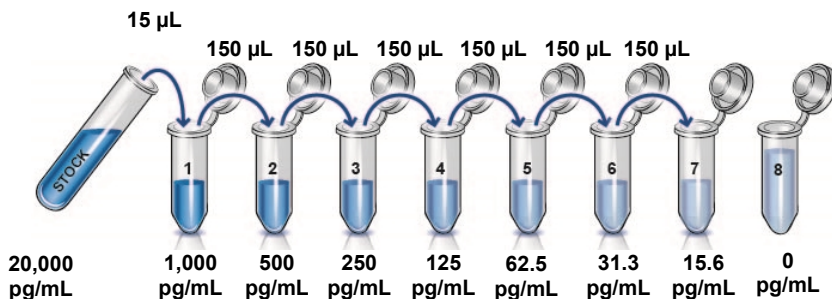
- 10.1 **IMPORTANT:** If the protein standard vial has a volume identified on the label, reconstitute the TSLP standard by adding that volume of Diluent indicated on the label. Alternatively, if the vial has a mass identified, reconstitute the TSLP standard by adding 500 μL Diluent.

For **serum samples**, reconstitute the TSLP standard by adding Sample Diluent 50BS by pipette.

For **cell culture supernatant samples**, reconstitute the TSLP standard by adding Sample Diluent NS.

Hold at room temperature for 10 minutes and mix gently. This is the 20,000 pg/mL **Stock Standard** Solution.

- 10.2 Label eight tubes with numbers 1 – 8.
- 10.3 Add 285 μL of appropriate sample diluent (See Step 10.1) to tube number 1 and 150 μL appropriate sample diluent (See Step 10.1) into tube numbers 2-8.
- 10.4 Use the Stock Standard to prepare the following dilution series. Standard #8 contains no protein and is the Blank control:



11. SAMPLE PREPARATION

TYPICAL SAMPLE DYNAMIC RANGE	
Sample Type	Range (%)
Human Serum	1.56% - 50
Cell Culture Supernatants	1.17% - 75

11.1 Serum

Samples should be collected into a serum separator tube. After clot formation, centrifuge samples at 2,000 x g for 10 minutes and collect serum. Dilute samples into Sample Diluent 50BS and assay. Store un-diluted serum at -20°C or below. Avoid repeated freeze-thaw cycles.

11.2 Cell Culture Supernatants

Centrifuge cell culture media at 2,000 x g for 10 minutes to remove debris. Collect supernatants, dilute samples into Sample Diluent NS and assay. Store samples at -20°C or below. Avoid repeated freeze-thaw cycles.

12. PLATE PREPARATION

- The 96 well plate strips included with this kit are supplied ready to use. It is not necessary to rinse the plate prior to adding reagents.
- Unused plate strips should be immediately returned to the foil pouch containing the desiccant pack, resealed and stored at 4°C.
- For each assay performed, a minimum of two wells must be used as the zero control.
- For statistical reasons, we recommend each sample should be assayed with a minimum of two replicates (duplicates).
- Differences in well absorbance or “edge effects” have not been observed with this assay.

13. ASSAY PROCEDURE

- **Equilibrate all materials and prepared reagents to room temperature prior to use.**
- **It is recommended to assay all standards, controls and samples in duplicate.**

- 13.1 Prepare all reagents, working standards, and samples as directed in the previous sections.
- 13.2 Remove excess microplate strips from the plate frame, return them to the foil pouch containing the desiccant pack, reseal and return to 4°C storage.
- 13.3 Add 50 µL of all sample or standard to appropriate wells.
- 13.4 Add 50 µL of the Antibody Cocktail to each well.
- 13.5 Seal the plate and incubate for 1 hour at room temperature on a plate shaker set to 400 rpm.
- 13.6 Wash each well with 3 x 350 µL 1X Wash Buffer PT. Wash by aspirating or decanting from wells then dispensing 350 µL 1X Wash Buffer PT into each well. Complete removal of liquid at each step is essential for good performance. After the last wash invert the plate and blot it against clean paper towels to remove excess liquid.
- 13.7 Add 100 µL of TMB Substrate to each well and incubate for 5 minutes in the dark on a plate shaker set to 400 rpm.

Given variability in laboratory environmental conditions, optimal incubation time may vary between 5 and 20 minutes.

Note: The addition of Stop Solution will change the color from blue to yellow and enhance the signal intensity about 3X. To avoid signal saturation, proceed to the next step before the high concentration of the standard reaches a blue color of O.D.600 equal to 1.0.

- 13.8 Add 100 µL of Stop Solution to each well. Shake plate on a plate shaker for 1 minute to mix. Record the OD at 450 nm. This is an endpoint reading.

Alternative to 13.7 – 13.8: Instead of the endpoint reading at 450 nm, record the development of TMB Substrate kinetically. Immediately after addition of TMB Development Solution begin recording the blue color development with elapsed time in the microplate reader prepared with the following settings:

Mode:	Kinetic
Wavelength:	600 nm
Time:	up to 20 min
Interval:	20 sec - 1 min
Shaking:	Shake between readings

Note that an endpoint reading can also be recorded at the completion of the kinetic read by adding 100 μ L Stop Solution to each well and recording the OD at 450 nm.

13.9 Analyze the data as described below.

14. CALCULATIONS

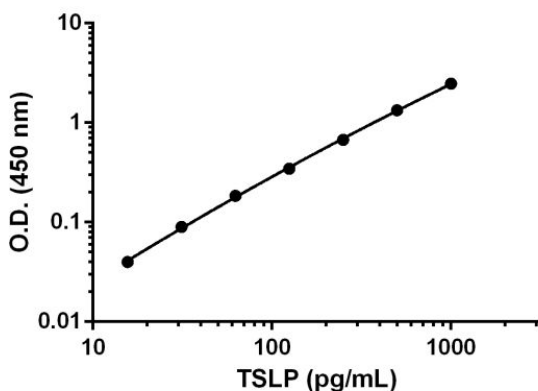
- 14.1 Calculate the average absorbance value for the blank control (zero) standards. Subtract the average blank control standard absorbance value from all other absorbance values.
- 14.2 Create a standard curve by plotting the average blank control subtracted absorbance value for each standard concentration (y-axis) against the target protein concentration (x-axis) of the standard. Use graphing software to draw the best smooth curve through these points to construct the standard curve.

Note: Most microplate reader software or graphing software will plot these values and fit a curve to the data. A four parameter curve fit (4PL) is often the best choice; however, other algorithms (e.g. linear, semi-log, log/log, 4 parameter logistic) can also be tested to determine if it provides a better curve fit to the standard values.

- 14.3 Determine the concentration of the target protein in the sample by interpolating the blank control subtracted absorbance values against the standard curve. Multiply the resulting value by the appropriate sample dilution factor, if used, to obtain the concentration of target protein in the sample.
- 14.4 Samples generating absorbance values greater than that of the highest standard should be further diluted and reanalyzed. Similarly, samples which measure at an absorbance values less than that of the lowest standard should be retested in a less dilute form.

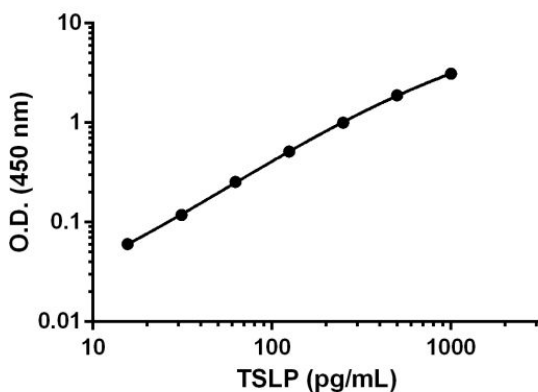
15. TYPICAL DATA

TYPICAL STANDARD CURVE – Data provided for **demonstration purposes only**. A new standard curve must be generated for each assay performed.



Standard Curve Measurements			
Conc. (pg/mL)	O.D. 450 nm		Mean O.D.
	1	2	
0	0.06	0.07	0.07
15.6	0.11	0.11	0.11
31.3	0.16	0.16	0.16
62.5	0.26	0.25	0.26
125	0.41	0.42	0.42
250	0.75	0.74	0.75
500	1.37	1.44	1.40
1,000	2.53	2.55	2.54

Figure 1. Example of TSLP standard curve prepared in Sample Diluent 50BS. The TSLP standard curve was prepared as described in Section 10. Raw data values are shown in the table. Background-subtracted data values (mean \pm SD) are graphed.



Standard Curve Measurements			
Conc. (pg/mL)	O.D. 450 nm		Mean O.D.
	1	2	
0	0.08	0.09	0.09
15.6	0.15	0.14	0.15
31.3	0.20	0.20	0.20
62.5	0.35	0.33	0.34
125	0.61	0.59	0.60
250	1.09	1.08	1.09
500	1.93	2.02	1.98
1,000	3.20	3.19	3.20

Figure 2. Example of TSLP standard curve prepared in Sample Diluent NS. The TSLP standard curve was prepared as described in Section 10. Raw data values are shown in the table. Background-subtracted data values (mean +/- SD) are graphed.

16. TYPICAL SAMPLE VALUES

SENSITIVITY –

The calculated minimal detectable dose (MDD) is determined by calculating the mean of zero standard replicates and adding 2 standard deviations then extrapolating the corresponding concentrations. The MDD is dependent on the Sample Diluent buffer used:

Sample Diluent Buffer	n=	Minimal Detectable Dose
Sample Diluent 50BS	42	6 pg/mL
Sample Diluent NS	42	3 pg/mL

RECOVERY –

Three concentrations of recombinant human TSLP were spiked in duplicate to the indicated biological matrix to evaluate signal recovery in the working range of the assay.

Sample Type	Average % Recovery	Range (%)
50% Normal Human Serum	88	83 - 93
75% RPMI	121	114 - 126

LINEARITY OF DILUTION –

Linearity of dilution is determined based on interpolated values from the standard curve. Linearity of dilution defines a sample concentration interval in which interpolated target concentrations are directly proportional to sample dilution.

Native TSLP was measured in the following biological samples in a 2-fold dilution series. Sample dilutions are made in Sample Diluent 50BS.

Dilution Factor	Interpolated value	50% Human Serum
Undiluted	pg/mL	79
	% Expected value	100
2	pg/mL	43
	% Expected value	115
4	pg/mL	23
	% Expected value	114
8	pg/mL	13
	% Expected value	114
16	pg/mL	8
	% Expected value	100

Recombinant human TSLP was spiked into the following biological samples and diluted in a 2-fold dilution series in Sample Diluent NS for 75% RPMI and Sample Diluent 50BS for 50% normal human serum.

Dilution Factor	Interpolated value	50% Human Serum	75% RPMI
Undiluted	pg/mL	645	448
	% Expected value	100	100
2	pg/mL	301	217
	% Expected value	93	97
4	pg/mL	142	110
	% Expected value	88	99
8	pg/mL	73	58
	% Expected value	91	103
16	pg/mL	41	30
	% Expected value	114	108

PRECISION –

Mean coefficient of variations of interpolated values from 3 concentrations of TSLP within the working range of the assay.

	Intra-Assay	Inter-Assay
n=	8	3
CV (%)	4.4	5.0

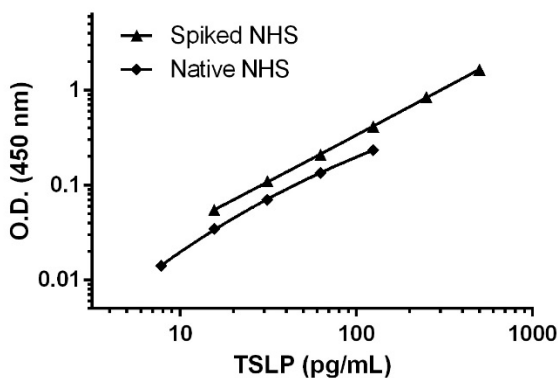


Figure 3. Titration of normal human serum (NHS) native and spiked with 0.5 ng/mL recombinant TSLP protein to within the working range of the assay. The samples and standard curve was diluted in Sample Diluent 50BS. Background-subtracted data values (mean \pm SD, $n = 2$) are graphed.

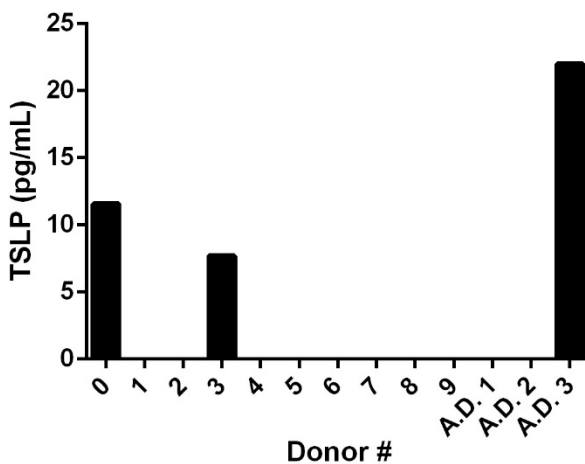


Figure 4. Assay for TSLP levels from 10 Individual Donor human serum samples and patients clinically diagnosed with Atopic Dermatitis (A.D.) to within the working range of the assay. Severity of A.D. symptoms and medical histories of all donors are unknown. Samples and standard curve was diluted in Sample Diluent 50BS. Background-subtracted data values (mean \pm SD, $n = 2$) are graphed.

17. SPECIES REACTIVITY

This kit recognizes human TSLP protein.

Other species reactivity was determined by measuring 50% serum samples of various species, interpolating the protein concentrations from the human standard curve, and expressing the interpolated concentrations as a percentage of the protein concentration in human serum assayed at the same dilution.

Reactivity < 3% was determined for the following species:

- Mouse
- Rat
- Hamster
- Guinea Pig
- Rabbit
- Dog
- Goat

Serum showing reactivity:

Species	% Reactivity
Pig	12
Cow	4.4

Please contact our Technical Support team for more information.

18. TROUBLESHOOTING

Problem	Cause	Solution
Poor standard curve	Inaccurate Pipetting	Check pipettes
	Improper standard dilution	Prior to opening, briefly spin the stock standard tube and dissolve the powder thoroughly by gentle mixing
Low Signal	Incubation times too brief	Ensure sufficient incubation times; increase to 2 or 3 hour standard/sample incubation
	Inadequate reagent volumes or improper dilution	Check pipettes and ensure correct preparation
	Incubation times with TMB too brief	Ensure sufficient incubation time until blue color develops prior addition of Stop solution
Large CV	Plate is insufficiently washed	Review manual for proper wash technique. If using a plate washer, check all ports for obstructions.
	Contaminated wash buffer	Prepare fresh wash buffer
Low sensitivity	Improper storage of the ELISA kit	Store your reconstituted standards at -80°C, all other assay components 4°C. Keep TMB substrate solution protected from light.

19. NOTES

Technical Support

Copyright © 2021 Abcam, All Rights Reserved. The Abcam logo is a registered trademark. All information / detail is correct at time of going to print.

For all technical or commercial enquiries please go to:

www.abcam.com/contactus

www.abcam.cn/contactus (China)

www.abcam.co.jp/contactus (Japan)